

FLPW 927

FLAME PROOF CONTROL GEAR BOX



Mechanical Data

Material	: Aluminium LM6
Weight	: 6.5/9.0 Kg approx
IP Protection	: IP 65 as per IS-12063/1987 (IEC 60529/1989)
Finish	: Anti corrosive epoxy powder coated
Cable Entry	: 3 x 3/4 " ET
Gasket	: Neoprene
Canopy	: Optional
Hardware	: Stainless Steel (SS-304)
Temp class	: T6

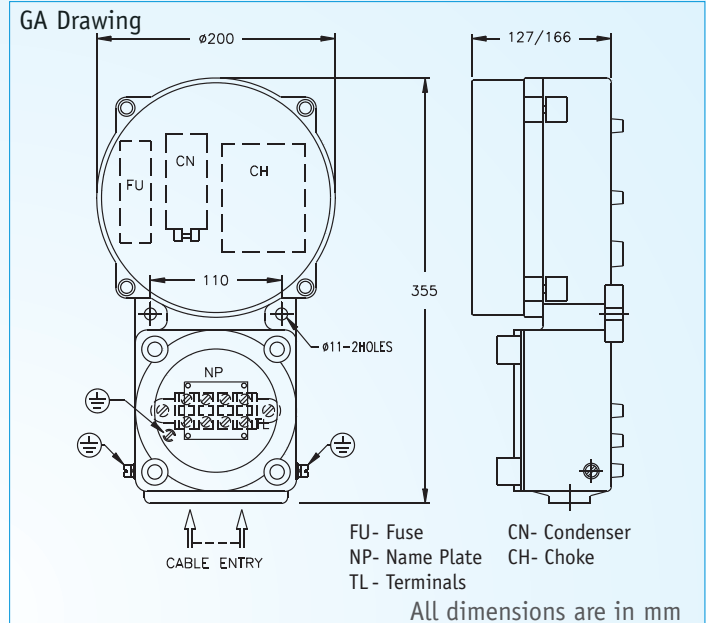
Electrical Data

Voltage	V	: 240 V AC , 50 Hz decreasing in steps upto 200 V
Wattage	W	: Refer to Power Rating Below
Terminals		: 4 way Terminal block suitable for 6 sq.mm
Wiring		: PVC insulated 2.5 sq.mm Stranded copper
Max. Cable size		: 3C x 6 sq.mm
Earthing		: External 2 Nos - M6 Internal 1 No - M5

Power Rating	Condenser (MFD)	Voltage (V)	Type
70 W	8	250 V AC	MH
150 W	20	250 V AC	MH
250 W	30	250 V AC	MH
400 W	40	250 V AC	MH
80 W	10	250 V AC	HPMV
125 W	10	250 V AC	HPMV
250 W	20	250 V AC	HPMV
400 W	20	250 V AC	HPMV
70 W	10	250 V AC	HPSV
150 W	20	250 V AC	HPSV
250 W	33	250 V AC	HPSV
400 W	40	250 V AC	HPSV

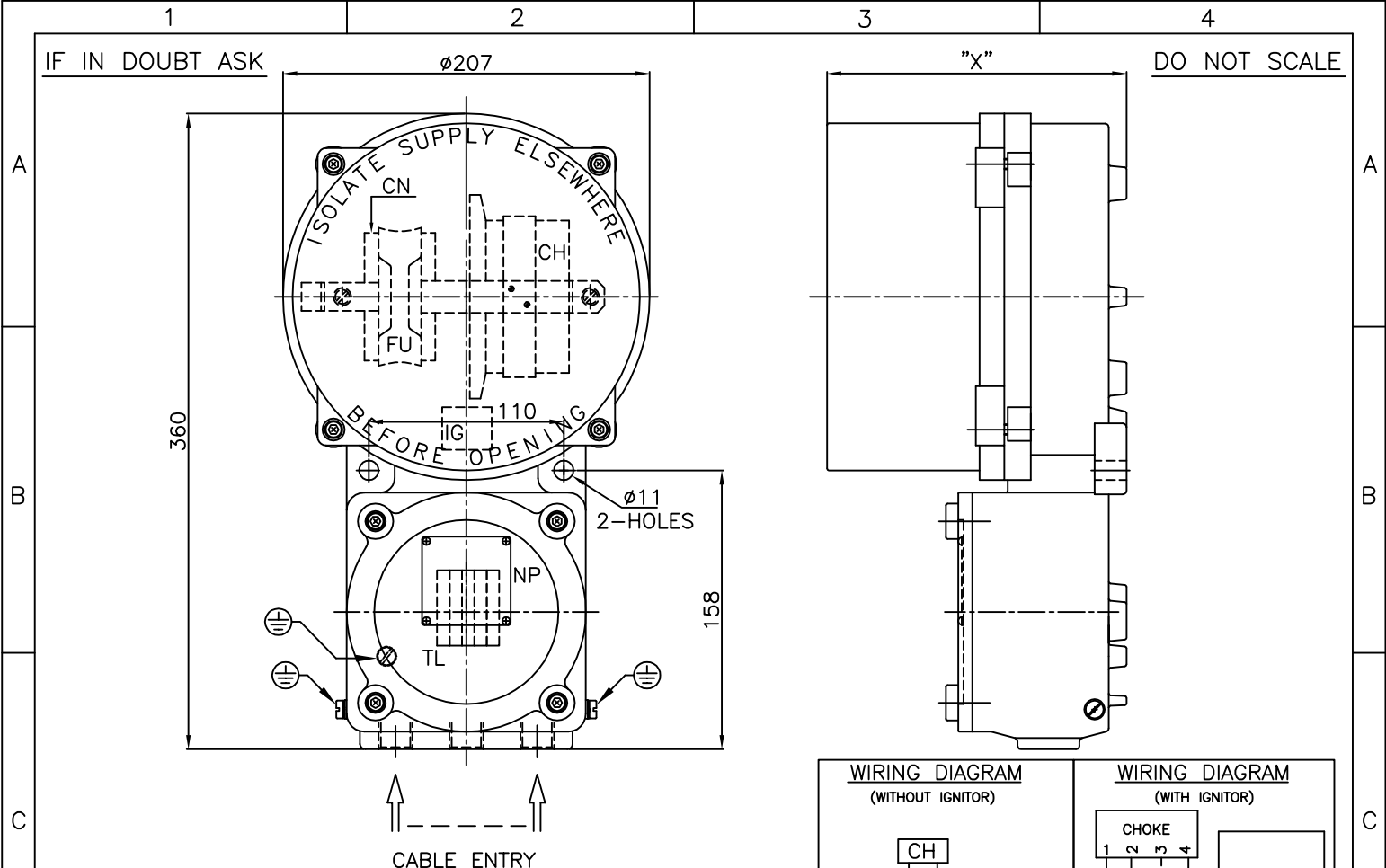
Description

Explosion proof Control gear box with an integral terminal chamber. A control gear tray is provided in the main chamber to mount ballasts and condensers up to 400 W. These components are connected to terminals in the terminal chamber through sealed cable bushings. The spigotted covers are provided with gaskets to ensure reliable weatherproof protection.



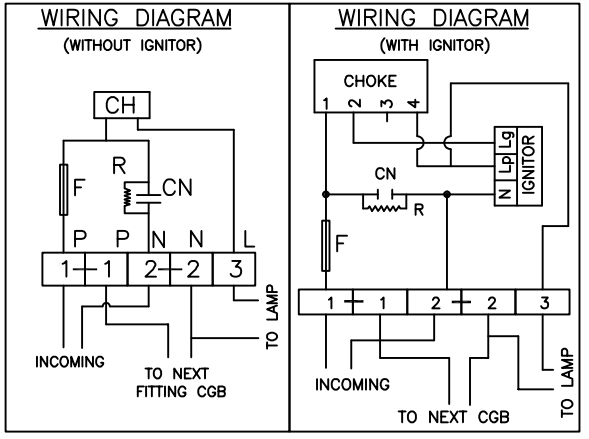
Cat. No.	CONTROL GEAR FOR LAMP RATING	CIMFR CERTIFICATE No.
FLPW - 927	80/125 W HPMV 70/150 W HPSV	CIMFR/TC/SR/H305
FLPW - 927 - RC	250/400 W HPMV 250/400 W MH 250/400 W HPSV	CIMFR/TC/SR/H1230

Type of protection	Flame Proof - Exd
Area Classification	Zone 1 & 2
Gas Groups	Group I, II A ,II B & II C
Apparatus Standard	IS:2148-2004 (IEC 60079-1/2001)
Approvals	CCE,BIS



NOTES:

- CN - CONDENSOR / CAPACITOR
- FU - HRC FUSE UNIT
- CH - CHOKE / BALLAST
- IG - IGNITOR (ONLY FOR MH & SON)
- TL - 5Nos. 4sq.mm TERMINAL BLOCK (ELMEX / PHOENIX)
- NP - NAME & WARNING PLATE (SS)
- HARDWARE - SS 304
- EARTHING - 2Nos. EXTERNAL & 1No. INTERNAL



WATTS	CHOKE / BALLAST	CONDENSOR / CAPACITOR	IGNITOR	FUSE	DIMENSION "X"	CMRI No.
80W	80W HPMV	10mfd	-	2A	130	CMRI/TC/P/H402 DT.14.03.1997
125W	125W HPMV	10mfd	-	4A	130	CMRI/TC/P/H402 DT.14.03.1997
150W	150W MH / 150W SON	20mfd	70W/150W	6A	170	CMRI/TC/P/H402 DT.14.03.1997
250W	250W HPMV	20mfd	-	6A	170	CMRI/TC/P/H858 DT.25.06.1997
400W	400W HPMV	20mfd	-	10A	170	CMRI/TC/P/H858 DT.25.06.1997

ALL DIMENSIONS ARE IN MM.

CABLE ENTRY: 3Nos. 0.75 ET/NPT	CUSTOMER :	TITLE : EXPLOSIONPROOF CONTROL GEAR BOX			
	CONSULTANT :	CAT No : FLPW-927			
PROJECT :	CLASSIFICATION : Exd IIC IP65 ZONE 1&2 T6				
P.O No. :	WT.:6.5KGs. (APPROX.)	MATL.: LM-6	ITEM No.:	QTY.:	
FINISH : EPOXY POWDER COATED LIGHT GREY (SHADE 631 OF IS:5)	TOLERANCE : ±5mm		FOR INFORMATION ONLY		
	SCALE N.T.S				
CMRI : REFER CHART	IS:13346/04 (IEC:60079-0/00)	NAME	DATE		SHEET 1 OF 1
CCE : A/P/HQ/MH/104/752 DT:30.06.04	IS:2148/04 (IEC:60079-1/01)	REV-1			
BIS : CM/L-0364341	IS:12063/87 (IEC:60529/89)	REV-2			
Baliga Lighting Equipments Private Limited, KOVILAMBAKKAM, CHENNAI-600117, INDIA.		DRN. S.S	20.12.08	DRG. No.	
		CHKD.		QEFLPW9271	0
		APPD.			



केन्द्रीय खनन एवं ईंधन अनुसंधान संस्थान

(वैज्ञानिक तथा औद्योगिक अनुसंधान परिषद)
बरवा रोड, धनबाद - 826015, झारखण्ड (भारत)

ADDITIONAL FIRST COPY



CENTRAL INSTITUTE OF MINING AND FUEL RESEARCH

Formerly : Central Mining Research Institute
(COUNCIL OF SCIENTIFIC & INDUSTRIAL RESEARCH)
BARWA ROAD, DHANBAD - 826015, JHARKHAND (INDIA)

REGISTERED POST/COURIER SERVICE

No. CIMFR/TC/SR/H305
I.D. No. 963/07

Dated: 22nd July, 2008
CODE NO. FLP/204D/08

To,
M/s. BALIGA LIGHTING EQUIPMENTS PRIVATE LIMITED,
389, Medavakkam Road,
Kovilambakkam,
CHENNAI-600 117, India

Sub: Supplementary Testing for **REVALIDATION** as per IS: 2148- 2004 (IEC 60079-1/2001) of your **Flameproof-cum-Weatherproof enclosure for Control Gear Box**, designated by **Cat. No. FLPW-927** for application in Gas Group IIC atmosphere only.

- Report on (REVALIDATION)

Your Ref. No. CIMFR/6/223/IIC, dated: 03.12.2007

Dear Sir,

Please find enclosed the **Supplementary Test Report** for **REVALIDATION** of the above sample as per IS: 2148-2004.

The above apparatus was earlier certified as per IS: 2148-1981 vide then CMRI Certificate No. CMRI/TC/H402, dated: 14.03.1997 mentioned in the schedule of this report.

Charges of **Rs. 19,485/- (Rupees Nineteen thousand four hundred eighty five)** only including applicable service charges involved towards the testing/issuing the schedule have been adjusted against the advance deposit made by you.

Kindly arrange to collect the sample within 90 days from the date of receipt of this letter failing which CIMFR would dispose off the sample by public auction without any further NOTICE to you.

Kindly acknowledge receipt.

Thanking you,

Yours faithfully,


(G. M. PRASAD)

HEAD OF THE DEPARTMENT
TESTING CELL

Encl.: As above
Supplementary Report for Revalidation in Triplicate
Copy to: 1. Head, Flame & Explosion Lab.
2. Bill Section.

1 of 5

फोन - निदेशक Director
Ph. : 0091 326 2202326/2203043

पी० ए० एक्स PAX
Ph. : 0091 326 2296027/2296028/2296029/2296010/2296013

फैक्स FAX
Ph. : 0091 326 2296019/2202429/2204339/2203150

e-mail : dcmrips@yahoo.co.in, dcmri@csir.res.in. Website : www.cmriindia.nic.in
कार्यालय के दिन : सोमवार से शुक्रवार तक **Working days : Monday to Friday**